

## Instructions for using LvfToAvi

1. Ordinary players can play lvf files after you install the **<playplus.exe>**, such as Microsoft Windows Media Player. It can play vedio files whose format is lvf.
2. If you have installed the **<playplus.exe>**, there will come out an icon on your desktop as figure 1 shows.



Figure 1

- 1) Run the program, and this tool enables you to convert the format of vedio files from lvf to avi. As figure 2 shows.

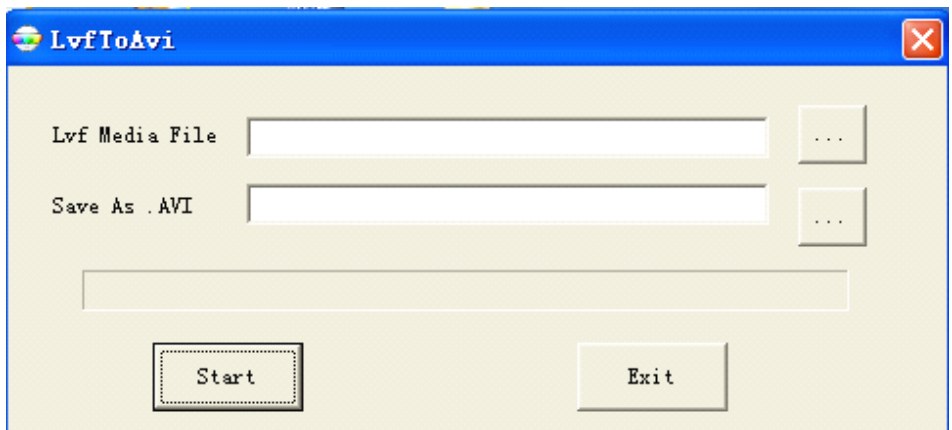


Figure 2



- 2) Click the button of blank bar behind the <Lvf Media File>, then pop up a dialog. You can select the path that the vedio file of LVF is in and open it (for example, D:\NetDvrV3\Download\ CH01\_20120718103710.lvf). As figure 3 shows.

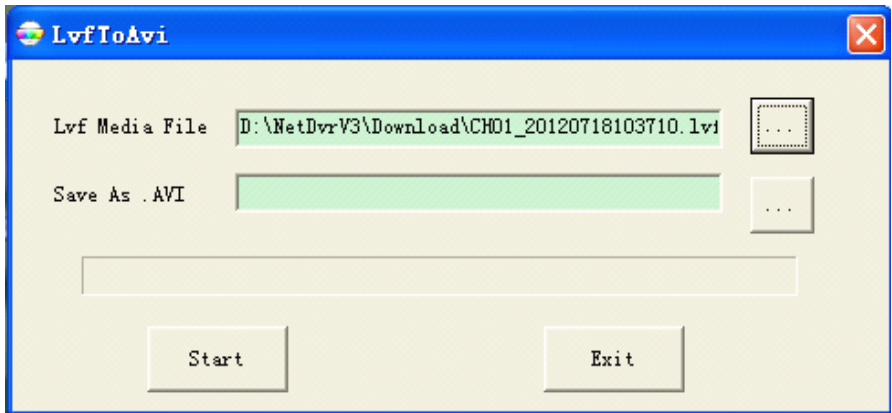



Figure 3

3) Click the button  of blank bar behind the <Save As .AVI>, then pop up a dialog. You can select the path that the video file of AVI is in and name it, then save it( for example, D:\NetDvrV3\Rec\1.avi). As figure 4 shows.

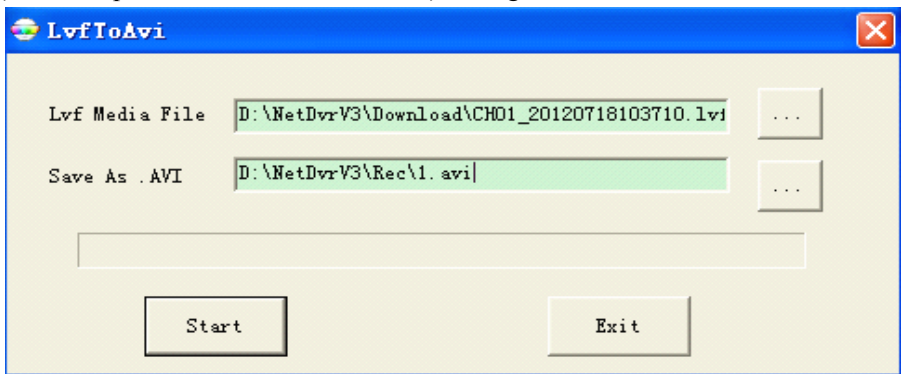
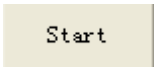


Figure 4

4) Click the button , there will come out the conversion progress. As figure 5 shows. Then there will pop up a dialog of figure 6, you can select YES or NO.

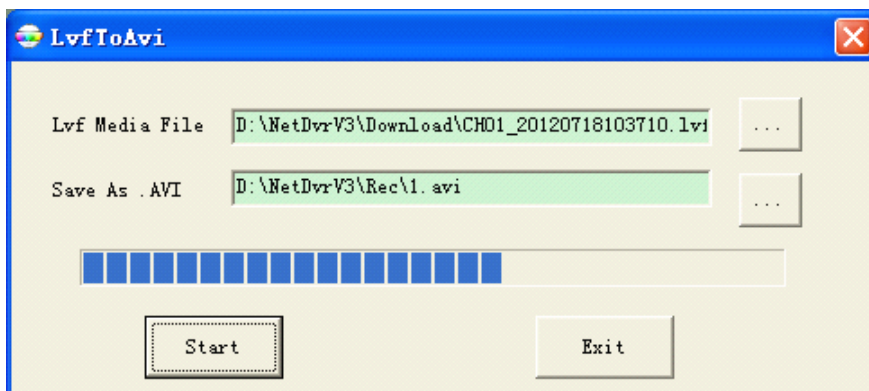


Figure 5

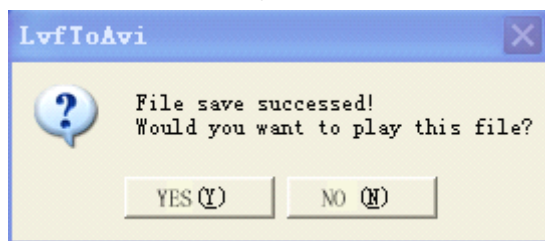
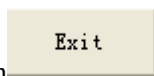
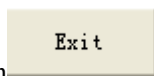


Figure 6



5) Click the button  and exit the program.

3. There is no need to install **<playplus.exe>** if you have installed the client of DVR. As the client has the function of converting the format of video files from lvf to avi.